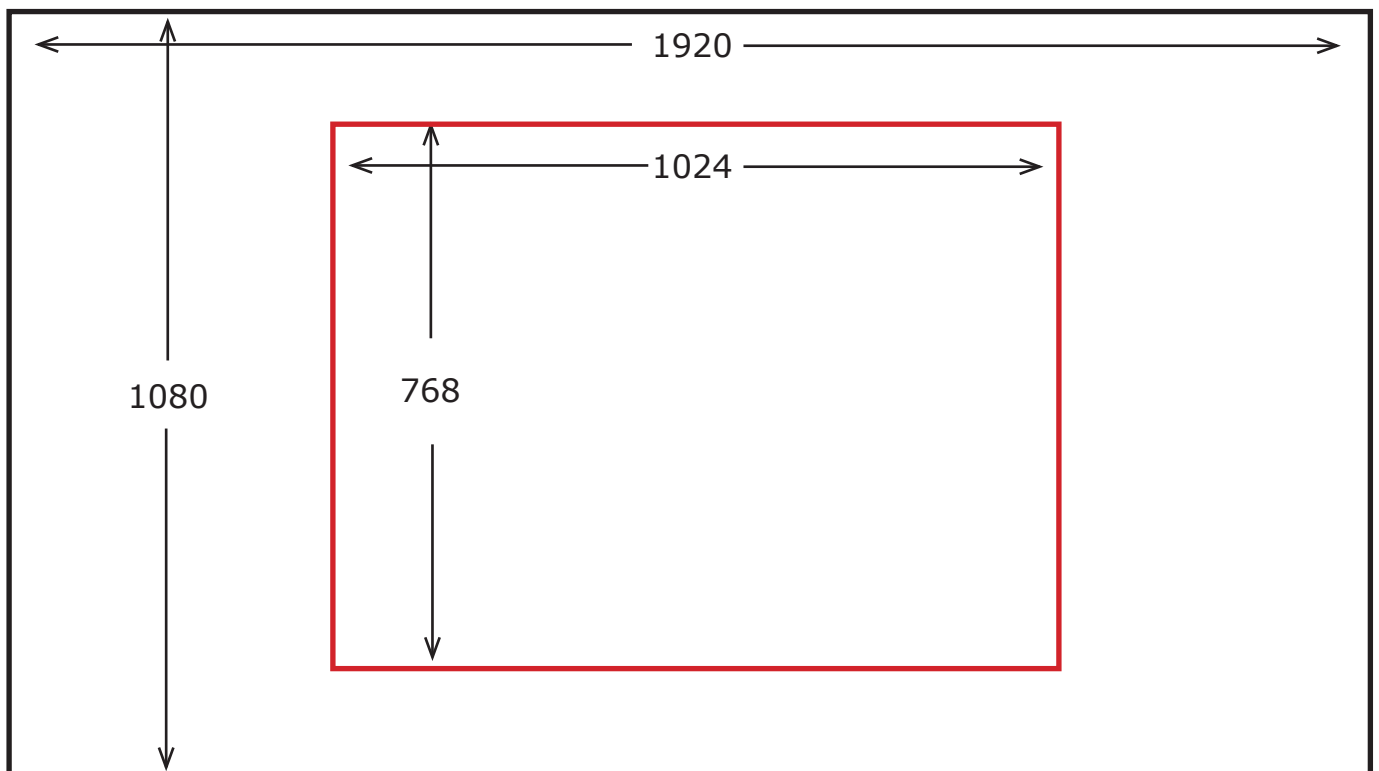

Making the most of the club's new projector

In January 2011 the club will have a new high definition projector installed. It will come into use for the first competition of the year on February 2nd.

Everyone who enters projected image competitions will be affected and will have to think about how to make the most effective use of the new equipment. There are two factors involved:

- an increase in resolution (overall number of image pixels)
- a change in display aspect ratio from 4:3 to 16:9

You will need to think about how best to present your images from the point of view of *available* aspect ratio, and how to achieve the necessary resizing.



The diagram shows you the relative size and shape of the old and new screens.

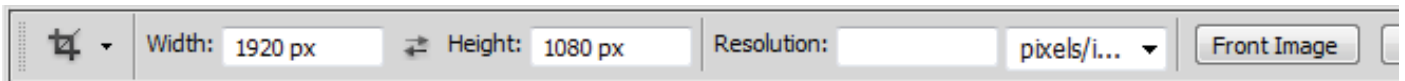
A suggested workflow for Adobe® Photoshop® and Photoshop Elements

Begin by working up your image at the full resolution of your camera as follows:

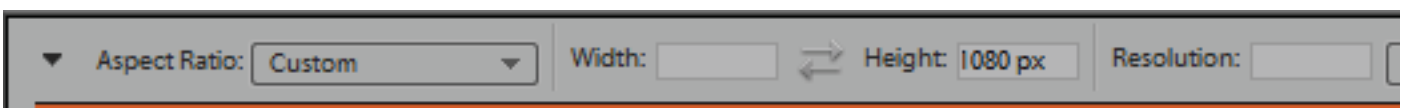
- straighten the horizon if necessary.
- Choose the Crop tool.

- make a decision about what you want your image to show. This is an artistic decision alone. There are four main shapes:
 - ◇ portrait. This is easy - your finished image must have a height of 1080 pixels. Type **1080 px** in the **Height:** box, and leave the Width: box clear.
 - ◇ square. Your finished image must be 1080 x 1080 pixels. Put these values in the boxes.
 - ◇ landscape. Your finished image should have a height of 1080 pixels, but the width will be an aesthetic choice. Type **1080 px** in the **Height:** box, and leave the Width: box clear. (It will be worth your while to consider whether a 1920 x 1080 crop makes a good looking image.)
 - ◇ panorama. Your finished image should have a width of 1920 pixels. You will choose the height to show off the pano at its best. Type **1920 px** in the **Width:** box, and leave the Height: box clear.
- using the crop tool, in the Options bar type in the desired height and/or width in pixels. Be sure to specify the units.

Here's an example from Photoshop (assuming a maximum sized image).



And here's the Options bar from Photoshop Elements (assuming a portrait or landscape image).



Now use the crop tool to select the required image pixels and when you accept the selection your image will be resized perfectly.

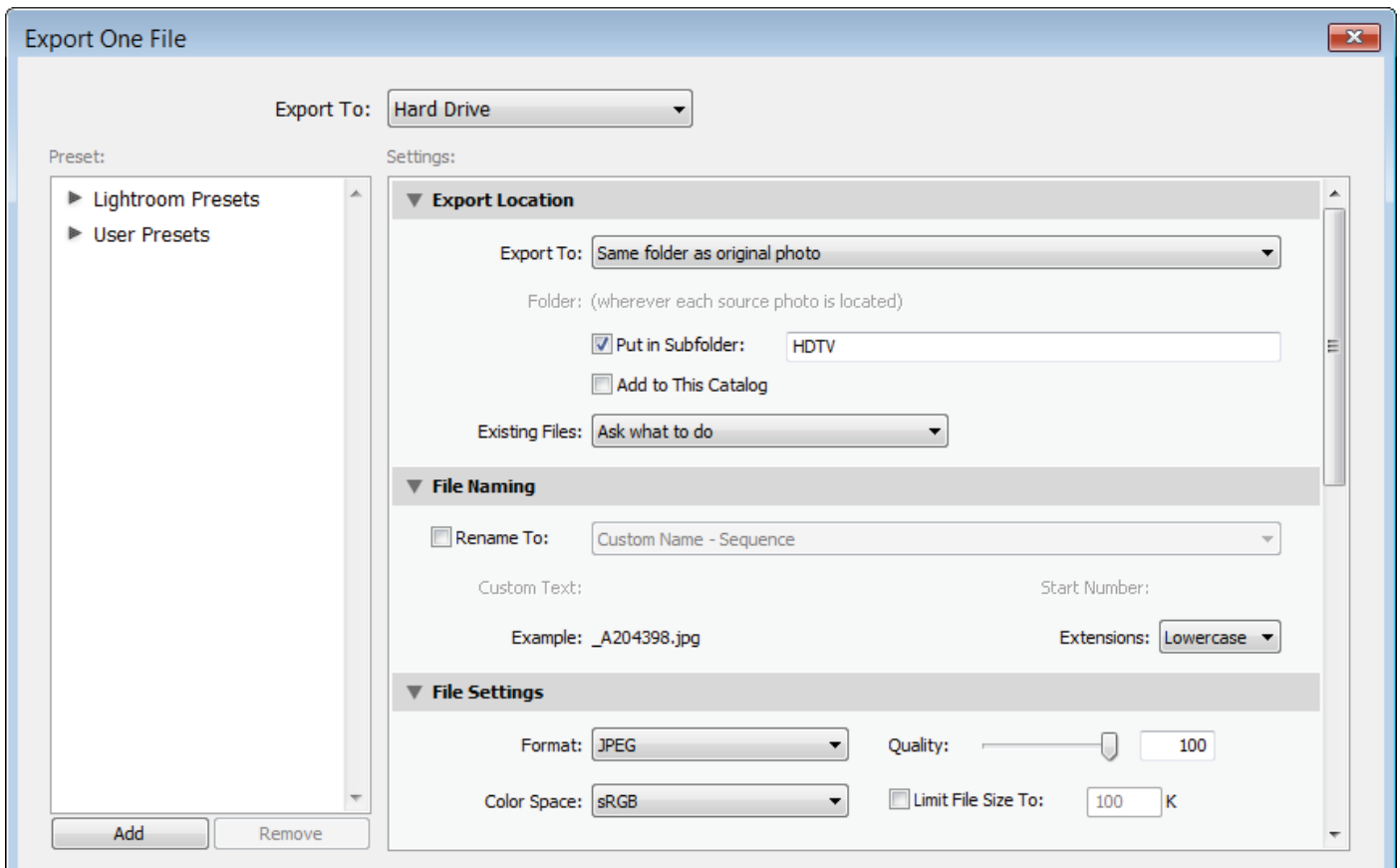
Tip: You can make the initial selection any size you please and then use the corner handles to adjust the size of the crop.

- Finish working up your image by making tonal range, sharpening and any other corrections.

Howto in Adobe Lightroom

Work in the Lightroom library and select one (or more) files from the catalogue or a collection.

- choose **File/Export** and you see the following dialog boxes (it's one dialog box that you have to scroll down).



Export location is where the resulting file will go. This is up to you, but it makes sense to me to store them in a subfolder of their original folder. (I call my subfolders HDTV to remind me that I am exporting images suitable for my HDTV.)

File Naming lets you rename files if you want to. This can be useful if you are making a slideshow and want the slides numbered sequentially.

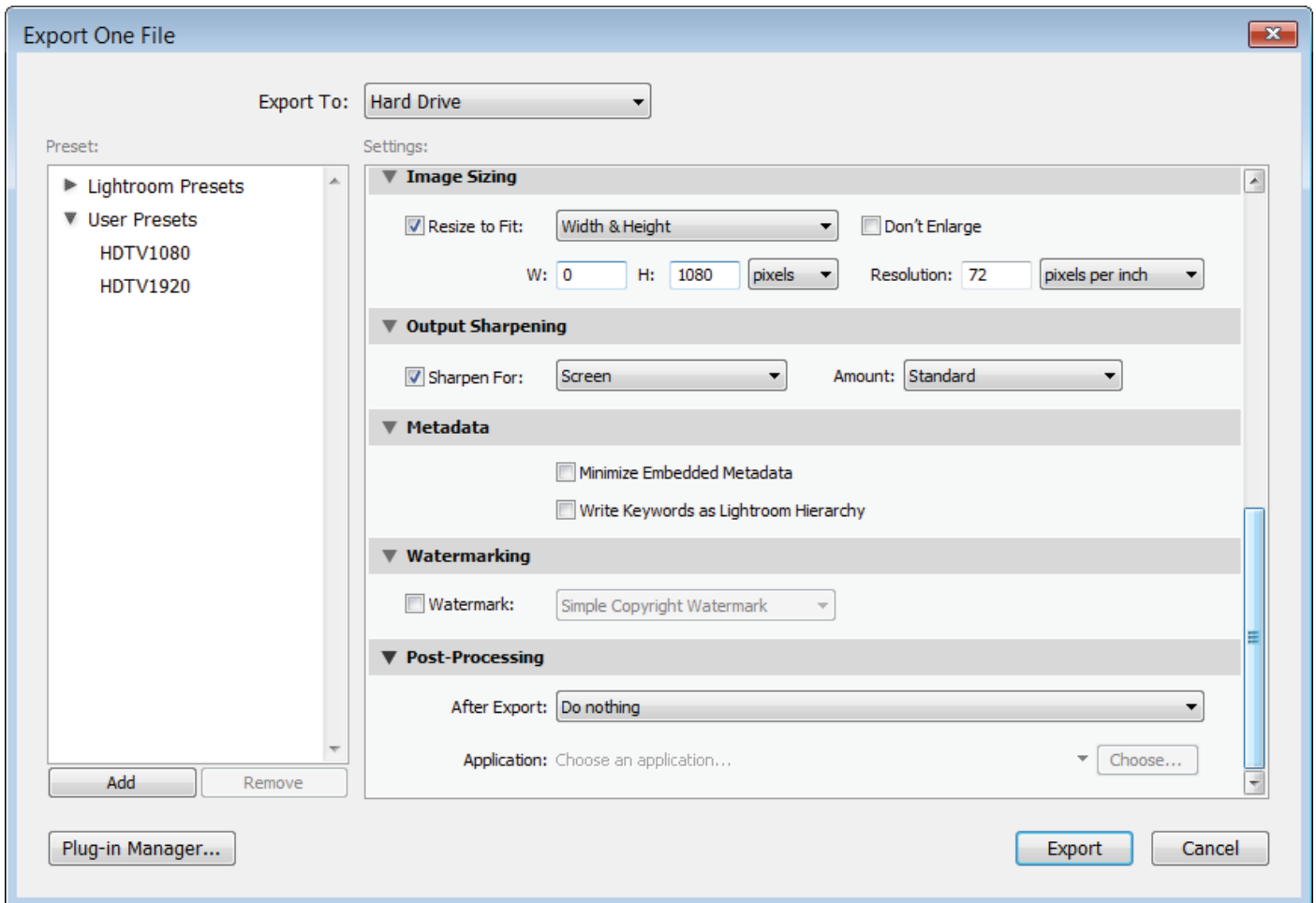
File Settings lets you choose the type and quality of the output file.

Image sizing is the crucial part of the dialog box. If you are exporting a portrait or square image, leave **W: empty** and make **H 1080 pixels**. If you are exporting a landscape that you know to have an aspect ratio less than 16:9, leave **W: empty** and make **H 1080 pixels**. If you are exporting a panorama or know the landscape to be 16:9 or more then leave **H: empty** and make **W 1920 pixels**.

Output Sharpening set to Screen.

Watermarking is up to you

Post-Processing is normally left at Do nothing.



Finally click on **Export**.

It's a good idea to save your settings which you can do by clicking on the **Add** button. Make a separate preset for the case where the 1080 dimension is dominant and another for the 1920 dimension.